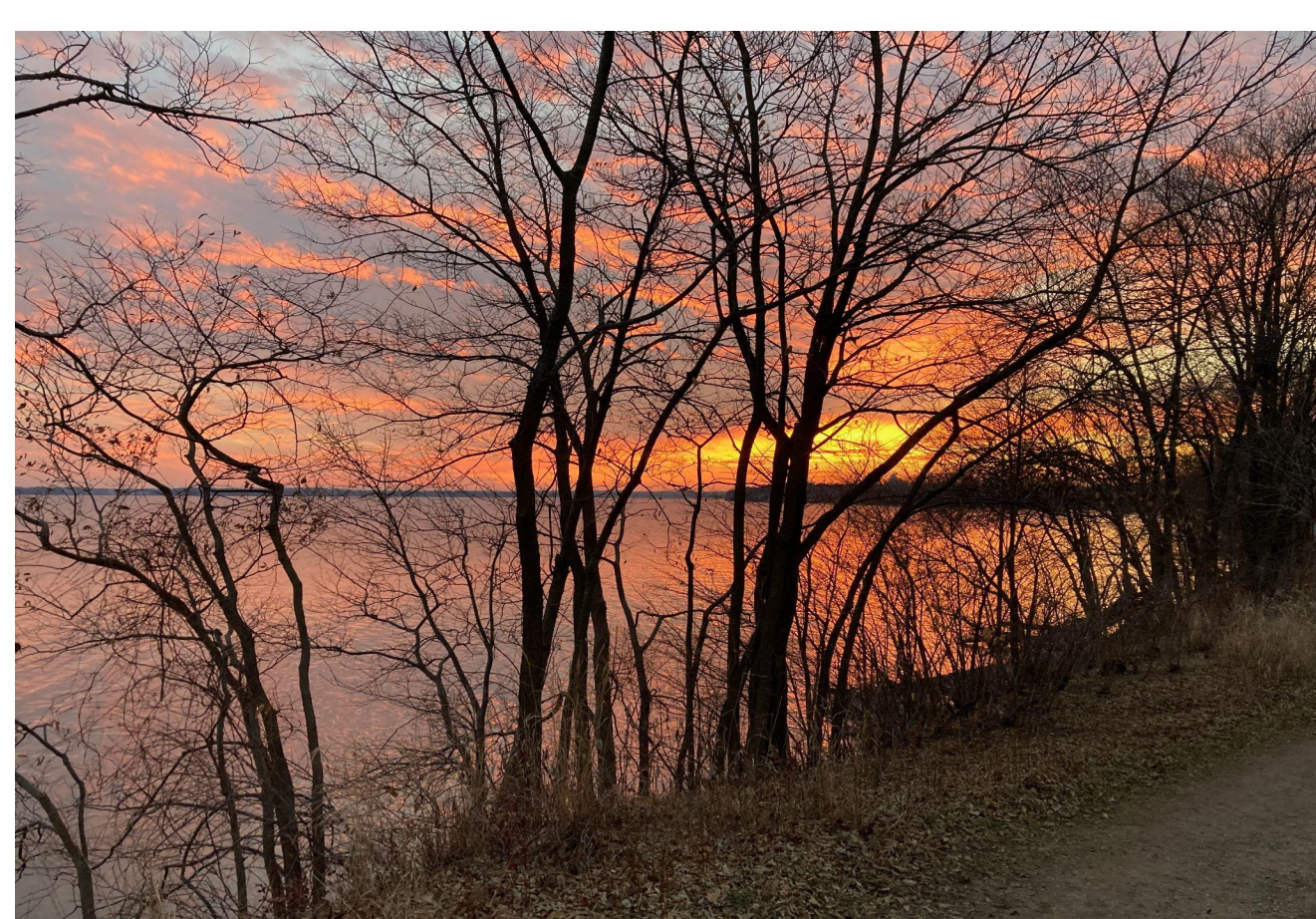




350

WISCONSIN



Let's take a moment to take 2 deep breaths together and reflect on our ties to this land we live on.

# Preview of Evening

- 7:00      Opening & Land Acknowledgment
- 7:05      **Community Needs Assessment: A First Step toward Collaborative and Effective Climate Justice**  
Kyla Smith, Climate Justice Organizer for 350 Wisconsin
- 7:40      Updates and Upcoming Events
- 8:00      Time to welcome newcomers & have optional breakouts

# Welcoming Kyla Smith, Climate Justice Organizer

The background features abstract, overlapping geometric shapes in various shades of green, ranging from light lime to dark forest green. The shapes are primarily triangles and polygons, creating a dynamic, layered effect. The overall composition is clean and modern, with the text centered in a white space.

# Community Needs Assessment: First Step toward Collaborative and Effective Climate Justice

Kyla Smith (she/her)

December 5, 2022



Learn more about the land you reside on at [native-land.ca](http://native-land.ca) or [wisconsinfirstnations.org](http://wisconsinfirstnations.org)

► Wisconsin First Nations

# Community Needs Assessment

- ▶ Assess the needs, characteristics, and values of a particular community
  - ▶ Ex. Neighborhood, city, zip code
  
- ▶ Planning committee's approach

# Climate Justice related Community Needs Assessments

- What are the prominent environmental and climate injustices in this area?
- Is there a racial/ethnic demographic, socioeconomic group, or geographic location that is disproportionately feeling the burden of climate issues?
- What policies or lack of policy created this problem? Is there a policy enabling this problem?
- What historical events have led to said environmental or climate injustices?



# Importance of Community Needs Assessments and Community Input

## 4. Require Community Participation

At all levels and in all realms, people must have a say in the decisions that affect their lives. Decisionmakers must include communities in the policy process. U.S. federal and state governments, recognizing their government-to-government relationship, must work with tribes as well.

- ▶ 10 Principles for Just Climate Change Policies in the U.S., 2004

7) **Environmental Justice** demands the right to participate as equal partners at every level of decision-making, including needs assessment, planning, implementation, enforcement and evaluation.

- ▶ Principles of Environmental Justice, 1991

# Importance of Community Needs Assessments and Community Input

- ▶ Planning committees and “expert opinions”
- ▶ Barriers to listening sessions
  - ▶ Ex. Session taking place in the middle of the day, in a geographical location far away like at a municipal building downtown
    - ▶ Paying for parking, conflicting with work schedule, childcare, unfamiliar space

# Detroit Environmental Justice Climate Equity Work

- ▶ Community Needs Assessment and Project Recommendations

## Methods



Stakeholder and  
Community Member  
Interviews



Survey



Data Collection

# Results

- What are the prominent environmental and climate injustices in this area? + What historical events have led to said environmental or climate injustices?



Motor City of America □ Industrial Boom



Large Amount of Traffic □ Hub between two countries



Old Infrastructure □ Before lead and asbestos bans

# Results

- Is there a racial/ethnic demographic, socioeconomic group, or geographic location that is disproportionately feeling the burden of climate or environmental issues?

## 48217 Zip Code



Photographer: Steve



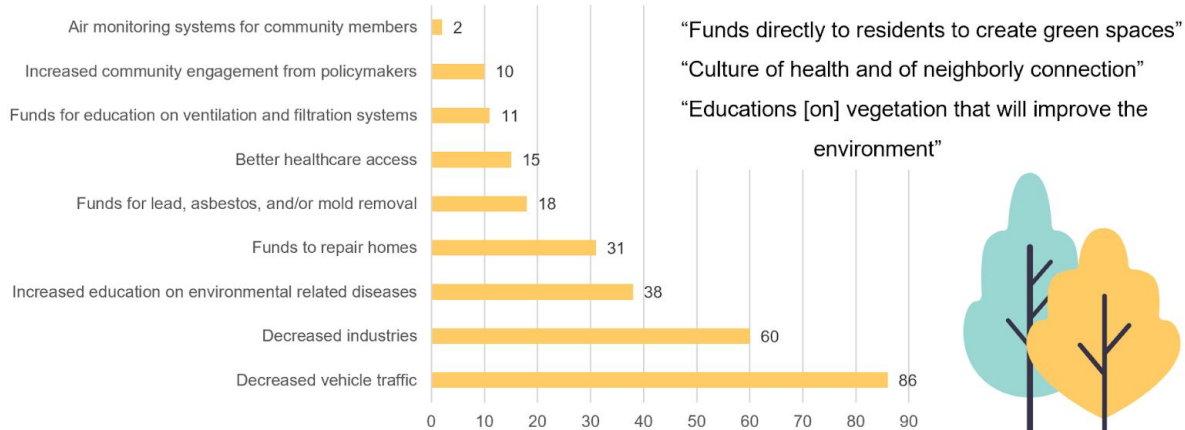
Action for the Climate Emergency

Neavling

# Project Recommendation

## ► Air Quality Monitoring Systems

### What additional project goals do you believe will increase the health of you and your community?



# Connection to Wisconsin

---

## Inside Climate News

[Donate](#)

---

Justice

### Indiana, Iowa, Ohio and Wisconsin Lag on Environmental Justice Issues

Not surprisingly, those with dedicated state EJ staff—namely Michigan and Minnesota—rank higher in progress, according to a recent report.



By Grace van Deelen  
November 21, 2022

# Positive Shifts in WI for Climate and Environmental Justice

- ▶ Increased involvement of nonprofit and grassroots organizations
- ▶ Inflation Reduction Act
- ▶ Tony Evers' Executive Order: Office of Environmental Justice
- ▶ Milwaukee City + County Climate and Equity Plan





▶ Questions?

Kyla Smith

[Kyla.Smith@350wisconsin.org](mailto:Kyla.Smith@350wisconsin.org)



# Action Updates

# Climate Justice Team shares a video from COP 27

- <https://www.youtube.com/watch?v=t5uUsZmNvTw>

# Looking for customers\* of Chase or Wells Fargo Banks



- We will train you how to meet with your bank branch manager and **ADVOCATE FOR CLIMATE JUSTICE**
- Join us for one-hour online training,
  - Monday January 30, 7 pm
- Not a customer? You can still help with publicity, outreach and tech support for training.
- Interested?
  - Put your name in the chat
  - Come to the Divest & Defund breakout tonight
  - Contact Nikki Darga ([Nikki.darga@350wisconsin.org](mailto:Nikki.darga@350wisconsin.org))
  - Come to our planning meeting Wed Dec 7 at 8 pm

\* Credit card, mortgage, account, anything counts as customer

# Community Climate Solutions Team (CCST)

- **Thank you Kermit Hovey, founding co-lead**
- **Welcome, Rachel Robillard, new CCST co-lead**
- **Join Us:** To join any of our working groups, contact [susan.millar@350wisconsin.org](mailto:susan.millar@350wisconsin.org).

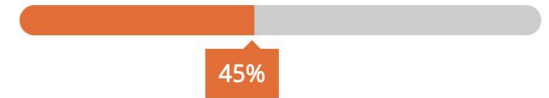


- **THANK YOU** to everyone who helped us exceed our goal!!

\$22,669.00 of \$50,000.00

- **Truly a Team Effort!**

- ~145 donors!
- 8 Team Baskets and 100+ silent auction items!
- 65 Business Donors!
- 50 Winning Bidders!
- 11 Peer-to-Peer Fundraisers!



- **Garver Feed Mill Celebration!**

- 80+ attendees
- Debut of 2022 “Together for the Climate’ Video

# Breaking news on Manchin dirty deal!

Call your member of Congress NOW at 917-791-2257

Call script:

“My name is \_\_, & I’m from \_\_. As your constituent, I’m urging you to vote NO on any rule that would advance Senator Manchin’s dirty permitting deal. I’m deeply concerned about any legislation that would fast-track fossil fuel projects, hurt our climate, & sacrifice communities.”

# Want to learn more about our teams?

Contact a team leader

Contact Nikki Darga, [Nikki.Darga@350wisconsin.org](mailto:Nikki.Darga@350wisconsin.org)

Meet and chat with Nikki now.



## Upcoming meetings

Tar Sands: 1st Mondays 5:45–6:45 pm

Contact [Phyllis.Hasbrouck@350wisconsin.org](mailto:Phyllis.Hasbrouck@350wisconsin.org)

Climate Justice: 2nd Mondays 7:00–8:30 pm

Contact: [Marian.Fredal@350madison.org](mailto:Marian.Fredal@350madison.org)

Communication Action (CAT): 3rd Mondays 7:00-8:30 pm

Contact [Emily.Park@350wisconsin.org](mailto:Emily.Park@350wisconsin.org)

Divest & Defund: 4th Mondays 7-8:30 pm- Not meeting in Dec!

Contact [divest.defund@350wisconsin.org](mailto:divest.defund@350wisconsin.org)

# Upcoming meetings

Community Climate Solutions: 3rd Thursdays 5-6 pm

Contact: [Susan.Millar@350wisconsin.org](mailto:Susan.Millar@350wisconsin.org)

Art Collective:

Contact: Russ Bennett [bennett.russ@gmail.com](mailto:bennett.russ@gmail.com)

Dianne Brakarsh [movingfromwithin@gmail.com](mailto:movingfromwithin@gmail.com)

State Policy: Contact [Gail.nordheim@350wisconsin.org](mailto:Gail.nordheim@350wisconsin.org)

Fundraising: 3rd Wednesdays 7-8pm

Contact [stephanie.robinson@350wisconsin.org](mailto:stephanie.robinson@350wisconsin.org)

Monthly Meeting planning, Dec 9 at 3 pm : Contact: [Julia.Isaacs@350wisconsin.org](mailto:Julia.Isaacs@350wisconsin.org)

# 350 Wisconsin monthly meetings open to all

Monday January 9

- Angie Smith will speak about climate refugees

Our February meeting will return to first Monday of the month

Stay tuned, one of these meetings is likely to be hybrid, so you can join us either in-person (in Madison) or online (via Zoom)

# Time for breakouts!

Stay here if you're a newcomer

Go to Room 1 for Q&A with our speaker

Go to Room 2 to learn about Divest & Defund's  
Customers for Climate Justice campaign

If you are unable to find the button or choose a room, put a message in the chat indicating which room you would like to join.

