

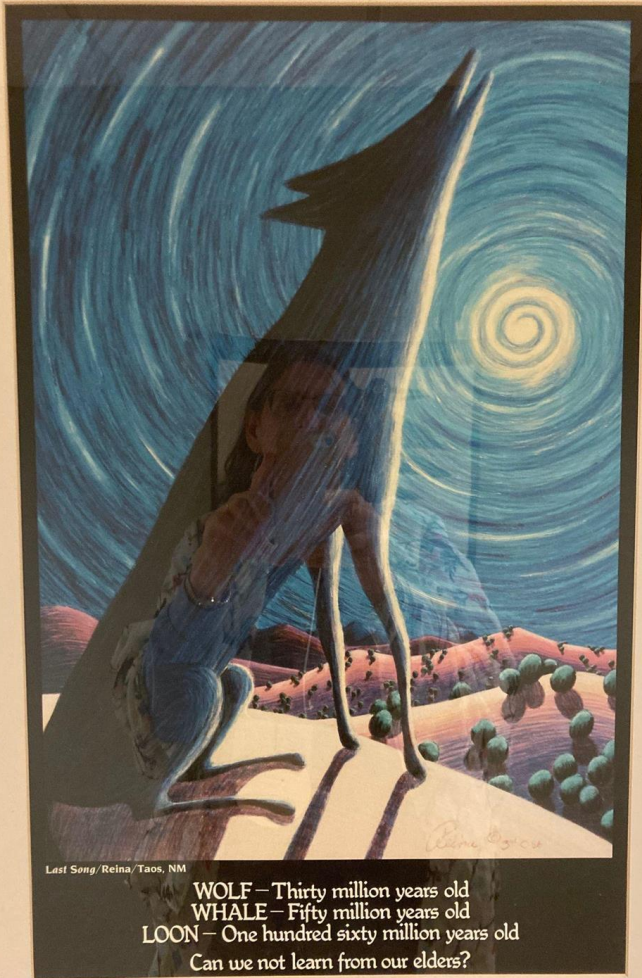


350

WISCONSIN

# Icebreaker in the chat

What inspired you to join 350 Wisconsin? What inspires you to keep working with us, “together for the climate”?



Last Song / Reina, Taos, NM

WOLF – Thirty million years old  
WHALE – Fifty million years old  
LOON – One hundred sixty million years old  
Can we not learn from our elders?

Let's take a moment to take 2 deep breaths together and reflect on our ties to this land we live on.



# Agenda for our Monthly Meeting

7:00                    Opening chat, land acknowledgement and welcome

7:07                    **Sun Block: Utility Proposals Darken Rooftop Solar  
Outlook**

Stephanie Robinson, 350 Wisconsin Development Director introduces  
Heather Allen, Elevate  
Michael Vickerman, RENEW Wisconsin

7:50                    Teams' Action Updates

8:05                    Time to welcome newcomers, Q&A with speaker

# Tonight's Speakers

## Heather Allen, Associate Director of Policy at Elevate

Since first discovering her passion for renewables upon going solar, Heather has dedicated herself to finding policy and program solutions to ensure all Wisconsinites have access to clean energy. Heather joined Elevate, in June 2023. As Associate Director of Policy at Elevate, she works to maximize the climate and equity benefits of deploying clean energy and energy efficiency.

From 2018 - 2023, Heather has served in a variety of roles at RENEW Wisconsin, a nonprofit dedicated to accelerating the transformation to clean energy. As Executive Director of RENEW she guided overall strategy, policy development, day to day operations, and engagement. Prior to joining RENEW, Heather worked as the Legislative Analyst for the City of Madison's Common Council. She brings a cumulative 15 years of experience developing policies and programs at the Clean Lakes Alliance, Natural Resources Defense Council, National Oceanic and Atmospheric Administration, and the City of Madison.

# Tonight's Speakers

**Michael Vickerman**, Clean Energy Deployment Manager for RENEW Wisconsin, a nonprofit organization founded in 1991 to promote clean energy development and use in Wisconsin.

RENEW designs policies and programs for promoting solar, wind, local hydro, heat pumps, energy storage, and electric vehicles to power Wisconsin's energy future. Michael has held several leadership positions with RENEW since 1991, including 18 years as executive director and 10 years as policy director. In his present position, Michael advances the interests of renewable energy producers, businesses and customers in the policy arena--through expert testimony and other regulatory filings, media interviews, presentations and commentaries. A UW-Madison graduate and a long-time resident of Madison's East Side, Michael enjoys circulating in and around Dane County on his trusty two-wheeled steed.





ELEVATE

# Protecting net metering: advancing climate and equity solutions through local solar





# Elevate: Meeting building owners where they are



Energy  
Efficiency



Electrification



Renewable  
Electric Supply



Managed  
Electricity Loads

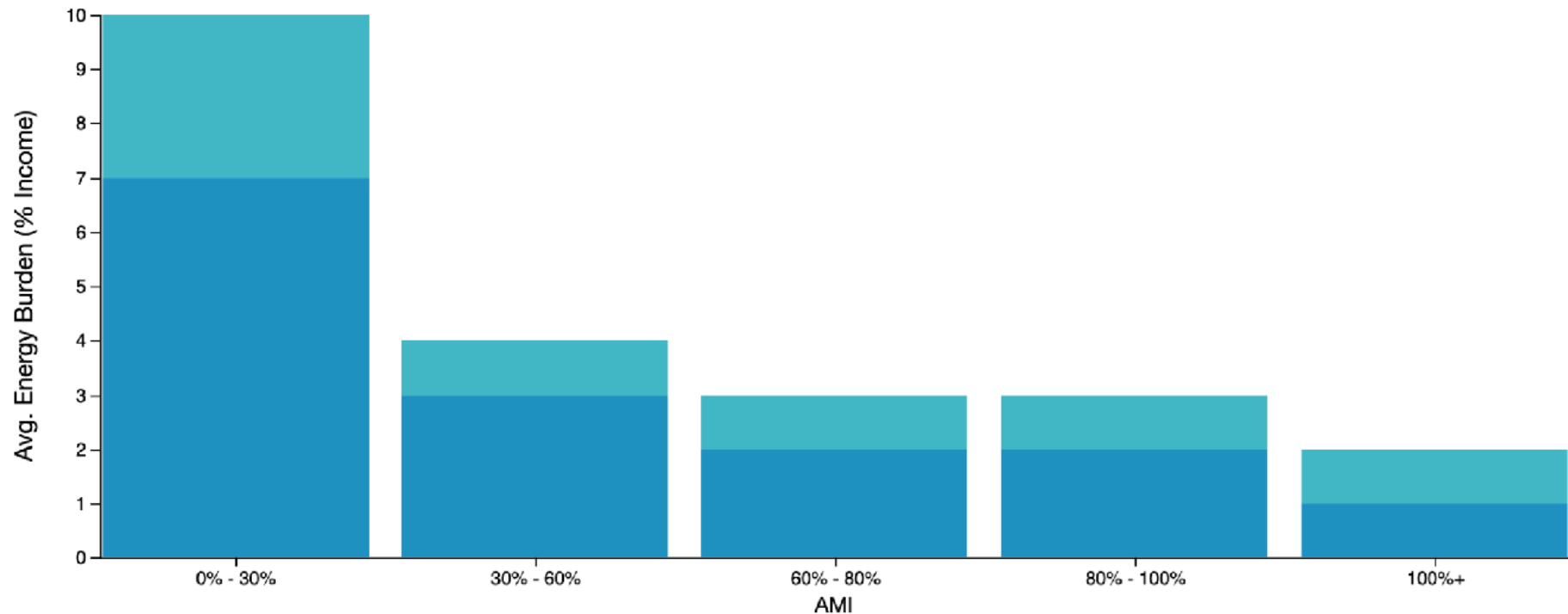


# Solar and Equity

- Control energy bills
- Electrify buildings and transportation
- Deploy solar on multifamily properties
- Promote local clean energy jobs
- Reduce total cost to grid system
- Increase in community resilience and reliability, especially when paired with storage and demand response
- Reduce greenhouse gas emissions



## Avg. Energy Burden (% Income) for Madison



- Madison**
- Electricity
  - Gas
  - Other

**350 Wisconsin's 2022 Low-Income Energy Burden in Madison analysis found that extremely low-income households have an energy burden of 10% - greater than 6% is considered unaffordable.**

# Solar for All

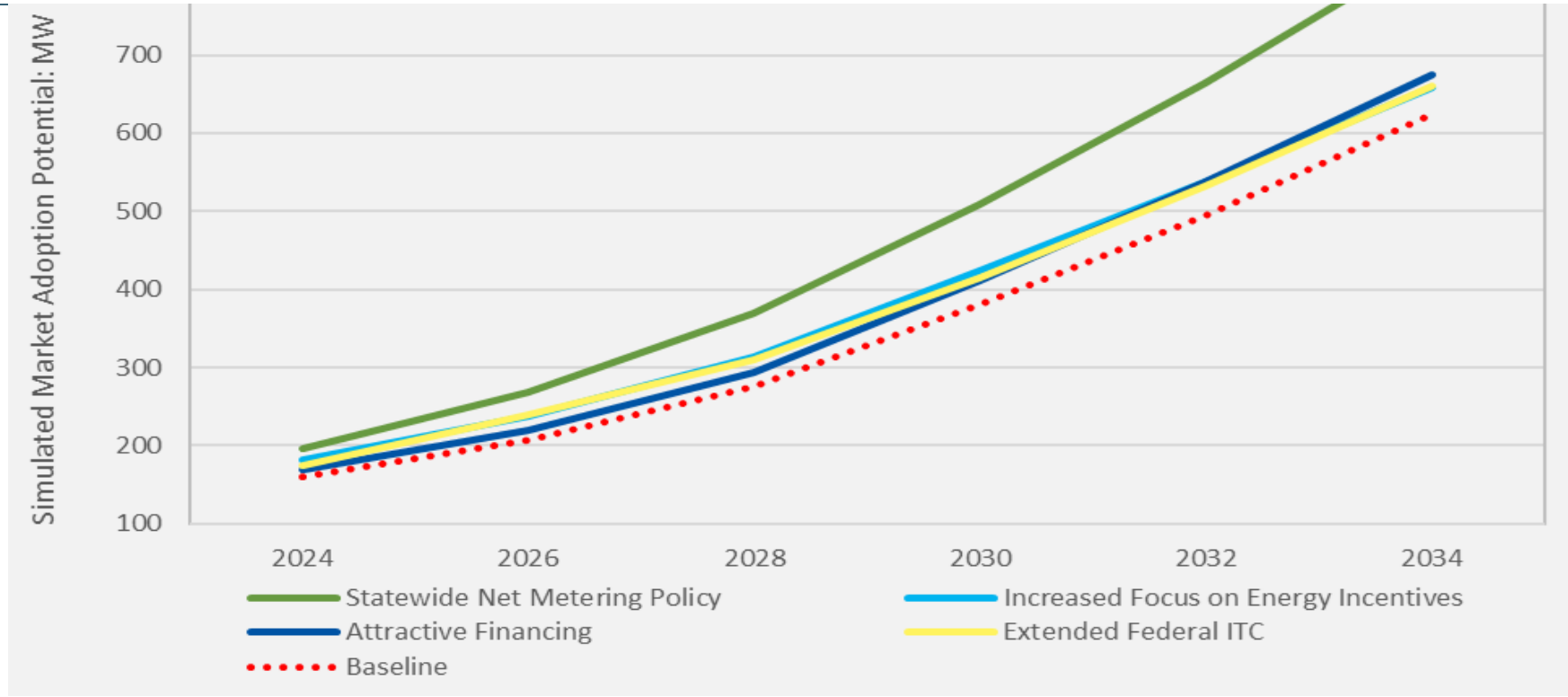
A 2020 Wisconsin study found that the key to unlocking rooftop solar potential in Wisconsin is a standardized net metering policy.

All told WI rooftops hold the potential to host 2.5 GW of solar capacity, a key element in the roadmap to Net Zero.

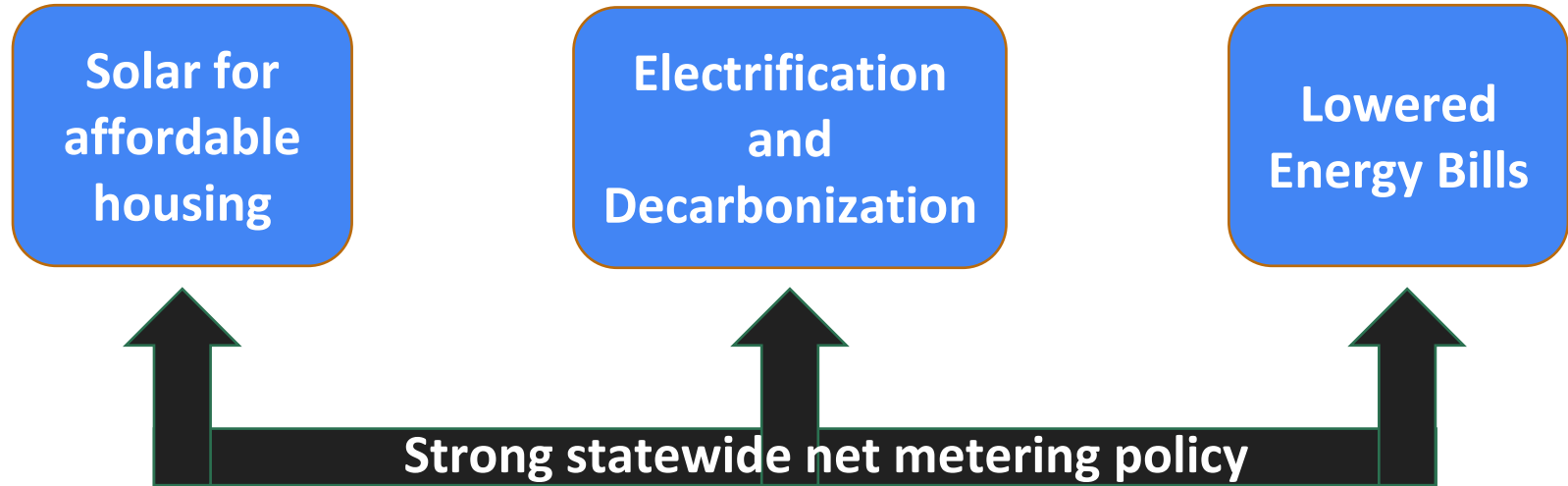
Instead, utilities are proposing an alternative to net metering which will make solar more expensive and less accessible for local families and community groups.



# “The most efficacious strategy for accelerating the adoption of rooftop solar systems is through implementation of a statewide net metering policy”



# Solar for All Building Blocks



**By 2050:  
223 GW of New Local Solar  
473B Savings  
Over 2M Jobs**



- Local Solar for all Costs less than the traditional utility planning model
- The affordable and equitable grid of the future requires
  - More and better data and planning
  - Local energy generation and optimization
  - Clear and predictable pricing
- Local Solar Roadmap study details at [localsolarforall.org](http://localsolarforall.org)
- New federal incentives offer a tremendous opportunity

# Contact information

Heather Allen

Associate Director, Policy

[Heather.allen@elevatenp.org](mailto:Heather.allen@elevatenp.org)

608-509-9447



# ELEVATE



[ElevateNP.org](https://www.ElevateNP.org)



[info@ElevateNP.org](mailto:info@ElevateNP.org)



[@ElevateNPOrg](https://www.facebook.com/ElevateNPOrg)



[@ElevateNPO](https://twitter.com/ElevateNPO)



[@ElevateNP](https://www.linkedin.com/company/ElevateNP)



# Sun Block: Utility Proposals Darken Rooftop Solar Outlook

Michael Vickerman

July 10, 2023



Habitat for Humanity  
Madison

Blount St. plant  
Madison



# Presentation Outline - Wisconsin

## What will be covered today

- Valuing rooftop solar
- The case for net metering
- The threat
- Status report on rate cases



Commonwealth Ave., Madison

# What Is Net Metering?

Net metering is a billing mechanism that enables utility customers who generate electricity for their own use to receive a credit, based on their retail energy rate, for any energy they export to the grid.

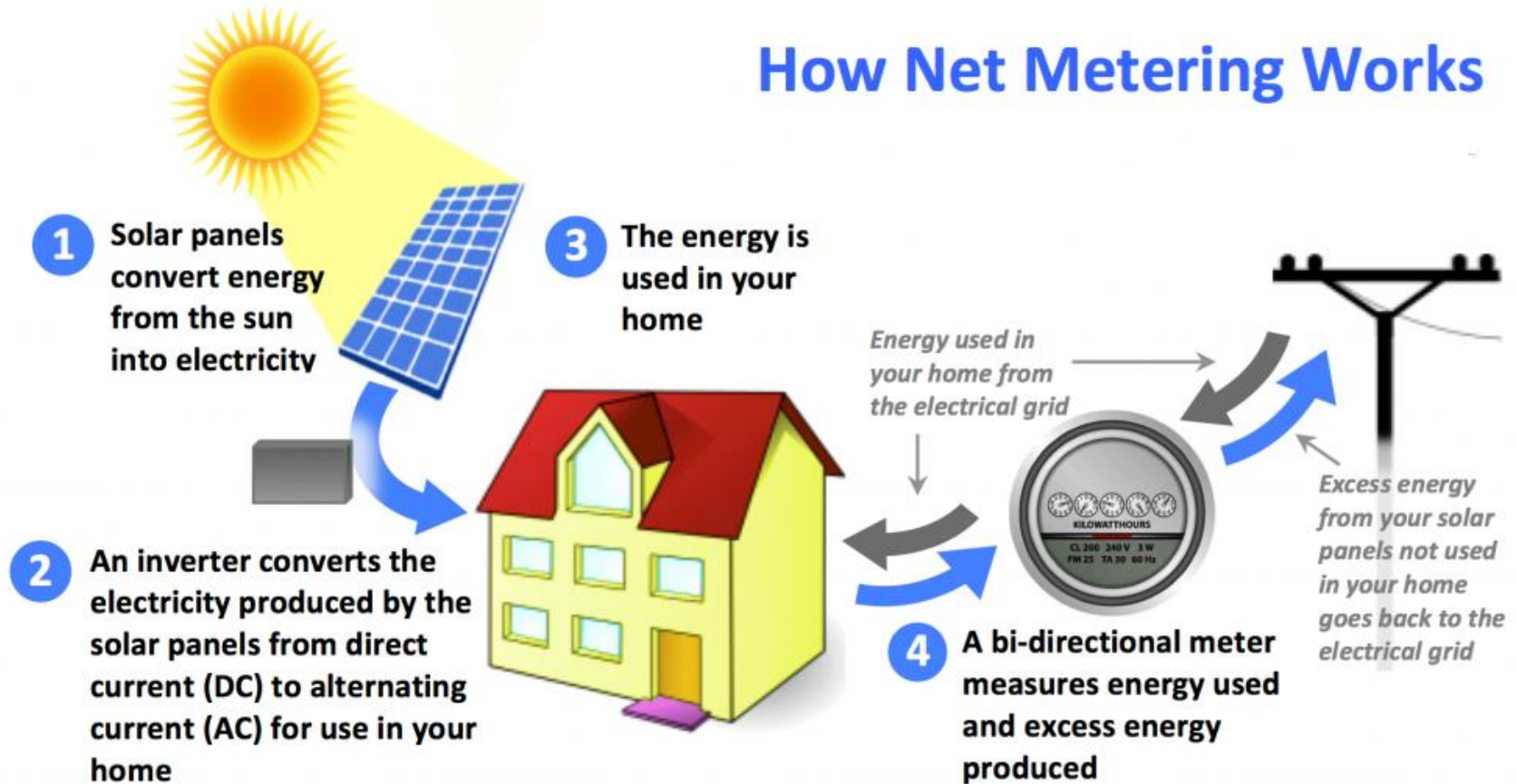
This arrangement encourages residential and business customers to invest in renewable power, displacing fossil energy sources that would otherwise have served that customer-generator.

# How Net Metering Came About in WI

- ▶ PSC Order established net metering in 1983
- ▶ Advance Plan 6 (1992) required utility offer of net metering
- ▶ Terms of service (size cap, netting frequency, etc.) adjusted in subsequent rate cases involving individual utilities.

**WI legislature has never taken up net metering. No organic policy in place to guide PSC here. Net metering landscape is a patchwork quilt.**

# How Net Metering Works



# Daily solar output vs. household usage in real time

**Red:** Grid supplied-electricity

**Blue:** Solar consumed by host

**Green:** Solar exported to grid





# Net metering value stream (to WI customers)

- Offsets use of grid-supplied electricity usage (savings valued at retail energy rate)—**13 to 17 cents/kWh**
- Compensates exported electricity at the retail energy rate (up to the allowed amount per billing period)-- **13 to 17 cents/kWh**
- Within a billing period, output that exceeds consumption is compensated at a lower (wholesale-based) rate— **3 to 6 cents/kWh**



# Differences between MGE + Alliant net metering service today

## MGE

- Up to 100 kW (AC)
- Rolling 12-month netting period

## Alliant

- Up to 20 kW (AC)
- One month netting period



## West Green Club

OUR WORK

### **Madison West High School**

*100 kilowatts*

*Commissioned 9/2020*

*Supplies 5.5% of high school's electricity*



2021 **RENEWABLE ENERGY SUMMIT**  
**BUILDING THE CLEAN ENERGY MOSAIC**  
TUESDAY, JANUARY 12 - THURSDAY, JANUARY 14

Both clinics have rooftop solar systems. The two buildings are owned by the same company, are of similar size, and have the same operating hours. The array serving Madison's East Side (left) has a rated capacity of 50 kW, while array serving Cottage Grove (right) has a rated capacity of 20 kW. Why the differently sized systems?

**WILDWOOD FAMILY CLINIC, S.C.**  
"HEALTHCARE FOR ALL AGES"

Home Services Special Programs Providers Contact Us Locations MyChart

Locations [Home / Locations](#)

**Madison Office**

4901 Cottage Grove Road  
Madison, WI 53716  
Mon-Fri 8:30 am – 5:00 pm, Sat-Sun Closed  
P: 608.221.1501  
F: 608.223.3540

**Cottage Grove Office**

251 East Cottage Grove Road  
Cottage Grove, WI 53527  
Mon-Fri 8:30 am – 5:00 pm, Sat-Sun Closed  
P: 608.839.3515  
F: 608.839.3541

**MGE's net metering threshold is 100 kilowatts**

**Alliant's net metering threshold is 20 kilowatts**

# Why do utilities dislike net metering?

- Reduces revenue flows to utility
- Exported electricity is compensated at the retail energy rate
- Customer pays for equipment; no opportunity for utility to earn a profit
- Customer generation lessens need to upgrade electricity infrastructure (and generate profits!)

# How do MGE and Alliant intend to change their rooftop solar service?

- By severing the export rate from the retail energy rate and substituting a new compensation formula that lowers it.

When the export rate is detached from the retail energy rate, the new treatment cannot be described as net metering. This model is known as **inflow-outflow**.





**WISCONSIN  
PUBLIC RADIO**

Wisconsin and the World. **npr**

## 2 Wisconsin utilities propose changing reimbursement rates for solar energy customers

Proposals come as industry pushes back on efforts advocates say would speed up solar adoption

By Joe Schulz

Published: Wednesday, July 5, 2023, 2:20pm

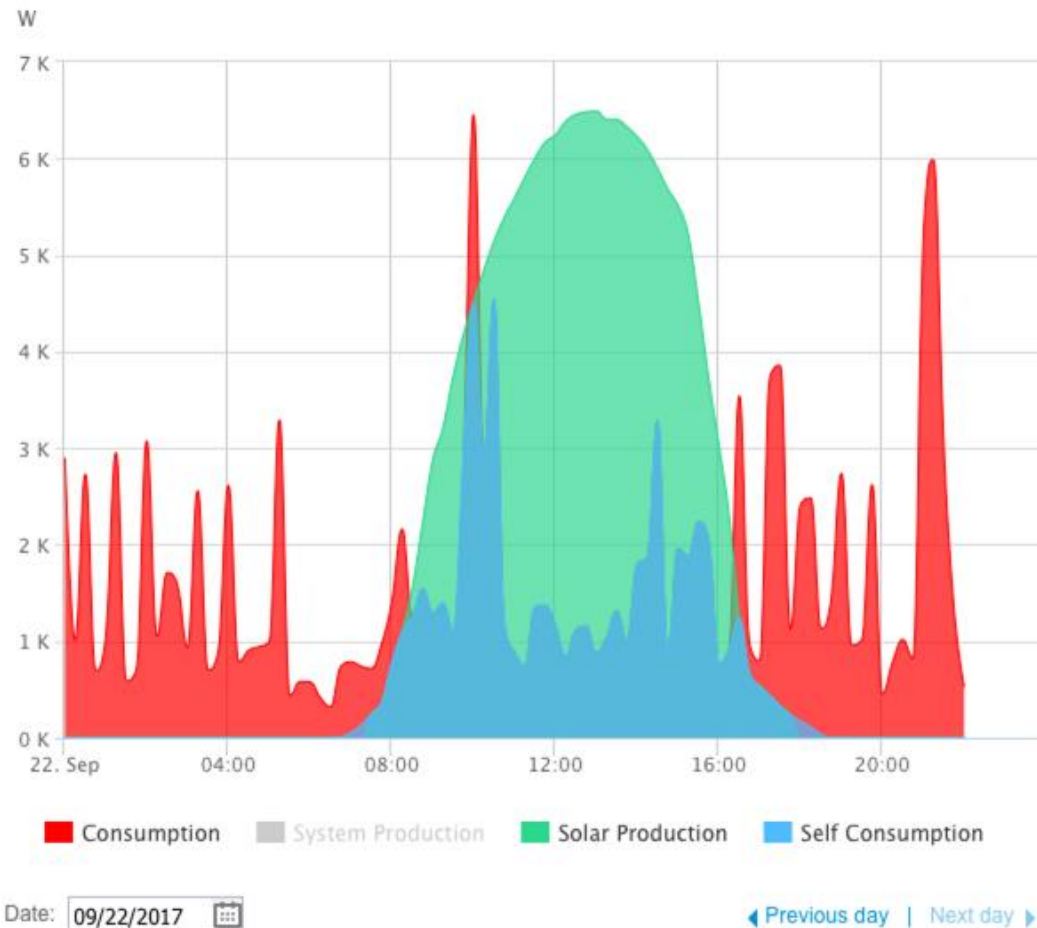
*“Alliant’s current net metering reimbursement rate for generation is roughly **7.1 cents** per kilowatt-hour for energy exported to the grid, according to utility spokesperson Tony Palese. He said the rate under the current structure is expected to shrink to **4.6 cents** in 2024.”*

***How solar output would be priced for new customers in MGE territory starting 4/2024.***

**Red (inflow):** ~17 cents/kWh

**Blue (offset):** ~17 cents/kWh

**Green (outflow):** ~4.6 cents/kWh





# Which groups would be especially disadvantaged by the MGE proposal?

- ▶ Entities with irregular schedules (e.g., houses of worship)
- ▶ Customers who can't afford to go solar without financing
- ▶ Small households with low consumption
- ▶ Workspaces operating weekdays only (9a – 5p)
- ▶ School districts/local govts. w/ carbon reduction goals
- ▶ Solar contractors + their workforce

## Is this a fair rate?

Consider the following: MGE provides a Shared Solar program to customers can't host or can't afford an onsite solar system. Shared Solar subscribers pay 10.9 cents/kWh for their share of the output, of which 8.4 cents represents avoided energy, capacity and transmission. Yet MGE would pay only 4.6 cents/kWh for solar power from sources other than those owned by the utility. Clearly, this ultralow outflow rate is intended to slow down the pace of new solar installations by making ownership economically unpalatable.

# Time to expand MGE's Shared Solar program!

- ▶ Price for Shared Solar less than standard Rg 1 electricity (10.9 cents vs. 11.1 cents/kWh). Subscribers are saving \$\$!
- ▶ Program fully subscribed since 2020. Capacity is frozen at 4 MW.
- ▶ Program structured to serve all residential customers, including LMI households and tenants in city-owned buildings
- ▶ No other pathway will enable majority of customers to drive new solar projects in such an efficient and equitable manner.

# MGE rate case intervenors (part 1)

- ▶ 350 WI
- ▶ Blacks for Political and Social Change in Dane County  
Board of Regents of the University of Wisconsin System  
ChargePoint
- ▶ Clean Wisconsin
- ▶ Citizens Utility Board  
City of Madison  
City of Middleton
- ▶ Dane County

*Bullet points indicate intervention in Alliant rate case as well*

# MGE rate case intervenors (part 2)

Elevate Energy

Local 2304 – International Brotherhood of Electrical Workers

- ▶ RENEW Wisconsin
- ▶ Sierra Club
- ▶ Solar Energy Industries Association
- ▶ Vote Solar
- ▶ Walmart
- ▶ Wisconsin Industrial Energy Group
- ▶ Wisconsin Local Government Climate Change

# Rate case process steps and schedule

## MGE (3270-UR-125)

Applicant Direct 4/28  
Intervenor Direct 8/28  
Rebuttal  
9/12  
Surrebuttal  
9/15  
Party hearing  
9/19

## Alliant (6680-UR-124)

Applicant Direct 4/28  
Intervenor Direct 9/5  
Rebuttal  
9/19  
Surrebuttal  
9/25  
Party hearing  
9/27

**NOTE: No date yet on public hearing or comment period.**

# Our ask

Please consider submitting comments opposing overhaul of net metering in both dockets

## Points to raise:

- ▶ Proposals will cause major disruption to Wisconsin's fastest growing solar market.
- ▶ Proposals will disadvantage customer groups who need stable pricing as a precondition for investment.
- ▶ Utilities, especially MGE, need more local generation of renewables to meet their decarbonization goals in a cost-effective manner.

**Resources:** <https://www.renewwisconsin.org/net-metering/>



# Questions?

**Michael Vickerman**  
**Clean Energy Deployment Manager**  
**[mickerman@renewwisconsin.org](mailto:mickerman@renewwisconsin.org)**



# Why are we concerned about these utility proposals?

- Affect rooftop solar growth while raising rates for working families.
- Hurt local businesses and those employed in the solar industry.
- More difficult for local governments and nonprofits to go solar and achieve clean energy goals.
- Worsen energy burden for low-income families through rate increases.
- More difficult for low- and moderate-income families to benefit from rooftop solar.
- More difficult to achieve WI climate goals in the Governor's Clean Energy Plan and Governor's Task Force on Climate Change report.

# How is 350 Wisconsin engaging on this issue?

**350 Wisconsin is an Intervenor** in MGE and Alliant rate cases, along with 18 other organizations, including local government, environmental orgs, social justice groups, labor, and business.

**350 Wisconsin is forming a campaign working group** – Activities and opportunities for engagement:

- a. Rally and press event (TBD)
- b. Uplifting equity issues
- c. Partnering with other organizations
- d. Social media campaign
- e. Letters to the Editor
- f. Comments to PSC

Complete our Survey on Solar Energy! (Link in the chat)

Contact Emily if you're interested in being involved! [emily.park@350wisconsin.org](mailto:emily.park@350wisconsin.org)



Action  
Updates

# Introducing our new Development Manager

Kristen Clark



# Puppetman Skit and Flash Mob on Saturday July 15



10 am Capital Square @  
North Hamilton Street

Still room for more people  
to help with banners,  
leaflets and tabling.

SIGN UP: <https://tinyurl.com/chase-flash-mob>



# Seeking Chase/Wells Fargo Customers (or Friends of Customers)

Join our training to learn how to meet with your branch manager and advocate for climate justice

Register for Zoom Link to the bank training on July 24th at 7 pm here: <https://tinyurl.com/bank-training>



# We need YOU at the Taste of Madison!



PROUDLY  
SPONSORED BY



**WHAT:** Work a shift in our Beer Tent at Taste of Madison

**WHEN:** September 2nd, 1-5:30 PM or 5:30-9:30 PM

**WHERE:** Capitol Square, Madison WI

**WHY:** Support 350 Wisconsin's fundraising!

Sign up for a shift: [www.tinyurl.com/350WI-TOM](http://www.tinyurl.com/350WI-TOM)





# Volunteer of the Month

## Alex Goetsch



# Summer Picnic in August

August 7 - In person, and an hour early, @ 6 pm

Summer Picnic, Brittingham Park (Madison)

Sorry, no zoom link provided in August



## Upcoming team meetings

Tar Sands: 1st Mondays 5:45–6:45 pm

Contact: [Goetschalex3@gmail.com](mailto:Goetschalex3@gmail.com)

Climate Justice: 2nd Mondays 7:00–8:30 pm

Contact: [Marian.Fredal@350madison.org](mailto:Marian.Fredal@350madison.org)

Communication Action (CAT): 3rd Mondays 7:00-8:30 pm

Contact [Emily.Park@350wisconsin.org](mailto:Emily.Park@350wisconsin.org)

Divest & Defund: 4th Mondays 7-8:30 pm

Contact [divest.defund@350wisconsin.org](mailto:divest.defund@350wisconsin.org)

# Upcoming team meetings

Community Climate Solutions: 3rd Thursdays 5-6 pm

Contact: [Susan.Millar@350wisconsin.org](mailto:Susan.Millar@350wisconsin.org)

Art Collective:

Contact: Russ Bennett [bennett.russ@gmail.com](mailto:bennett.russ@gmail.com)

Dianne Brakarsh [movingfromwithin@gmail.com](mailto:movingfromwithin@gmail.com)

State Policy: Contact Janet Niewold [janet.neiwold@gmail.com](mailto:janet.neiwold@gmail.com)

Fundraising: 3rd Wednesdays 7-8pm

Contact [stephanie.robinson@350wisconsin.org](mailto:stephanie.robinson@350wisconsin.org)

Monthly Meeting planning: Contact: [Julia.Isaacs@350wisconsin.org](mailto:Julia.Isaacs@350wisconsin.org)

# Time for breakouts!

Breakout room 1 for Q&A with speakers

Newcomers stay here to meet Nikki Darga, our volunteer engagement coordinator

ADD BACK IMAGE TELLING PEOPLE HOW TO JOIN BREAKOUTS.