

Icebreaking chat as we arrive.....

Put in the chat (if on zoom) or share with a person sitting near you if in person:

What is the title of one of a good book or movie with an environmental theme?

For those in person: If you cannot read these words, sit closer to the screen.



← 350

WISCONSIN



Let's take a moment to take 2 deep breaths together and reflect on our ties to this land we live on.



Agenda for our Monthly Meeting

- 7:00 Opening chat, land acknowledgement and welcome
- 7:10 **Energy for All: Climate Justice and Energy Burden in Wisconsin**
Stephanie Robinson, Co-Executive Director at 350 Wisconsin introduces our panel:
Liz Hachten, Energy Equity Work Group lead at [350 Wisconsin](#);
Cristina Carvajal, founder and director of [Wisconsin Eco-Latinos](#); and
Keviea Guiden, energy burden coordinator for [Citizen Action of Wisconsin](#) and coordinator for the [Wisconsin Climate Table](#).
- 7:55 Teams' Action Updates
- 8:10 Time to welcome newcomers, and network

Introducing our Speakers: Liz Hachten



Liz joined 350 Wisconsin in 2021 as a volunteer with the Community Climate Solutions Team, focusing on building decarbonization and energy justice. She brings research and communication skills developed in a thirty-year career as a university professor and administrator to her role as lead of the Energy Equity Working Group, which has produced a series of five reports on low-income energy burdens in communities in south-central Wisconsin, including reports on Janesville and Beloit prepared in collaboration with Wisconsin EcoLatinos. Liz received her Ph.D. in the History of Science and Medicine from the University of Wisconsin-Madison.

Introducing our Speakers: Cristina Carvajal



Cristina Carvajal is the founder and Executive director of Wisconsin EcoLatinos, a non-profit organization that strives to assist the Latino community in Wisconsin in combating environmental hazards and advocates for a just and sustainable environment. Cristina's Petroleum and Environmental Engineering background has provided her with a distinctive outlook on environmental conservation. She is a member of several committees, including the Sustainable Madison Committee, the Lake Monona Waterfront Ad-hoc Committee, and the UW Public Health Institute Advisory Committee.

Introducing our Speakers: Keviea Guiden



Keviea is the Energy Burden Organizer with Citizen Action of Wisconsin and Energy/Climate Project Coordinator for the Wisconsin Climate Table. Keviea has been a civically engaged grassroots organizer since 2018, advocating strongly for families in the 53206 zip code as well as surrounding neighborhoods throughout Milwaukee. She led the "Fight for Our Lights," campaign, hosting rallies and protests against WE Energies rate hikes. Keviea's work has garnered attention from CNN, Washington Post, Mother Jones Magazine, Milwaukee Journal Sentinel, and German news channels. She received the 2023 African American Environmental Pioneer Award. Keviea's dedication and investment in Milwaukee are evident. Her commitment extends to advocating for energy burdens, clean water, social justice, fair housing, livable wages, and thriving neighborhoods. Keviea was born in Milwaukee and raised in the Hillside Projects. She has two degrees from the MATC downtown campus.

Liz Hachten

Volunteer

350 Wisconsin's Community Climate
Solutions Team

Lead, Energy Equity Working Group

liz.hachten@350wisconsin.org



What is Energy Burden?

The percentage of gross household income spent on energy costs



Greater than 6% is a high energy burden.
Greater than 10% is a severe energy burden.

An affordable energy burden is defined as 6% or less of household income.

Average energy burden in:

Wisconsin = 2%

Madison, Middleton = 2%

Fitchburg = 1%

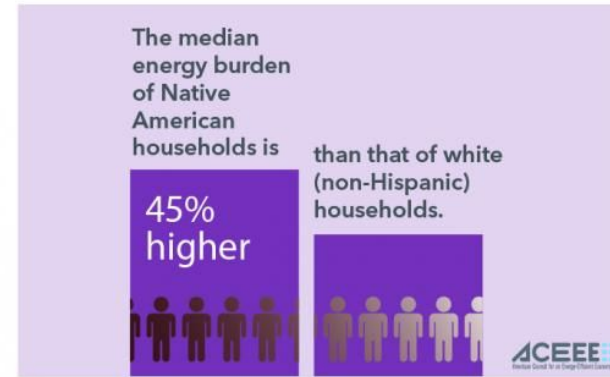
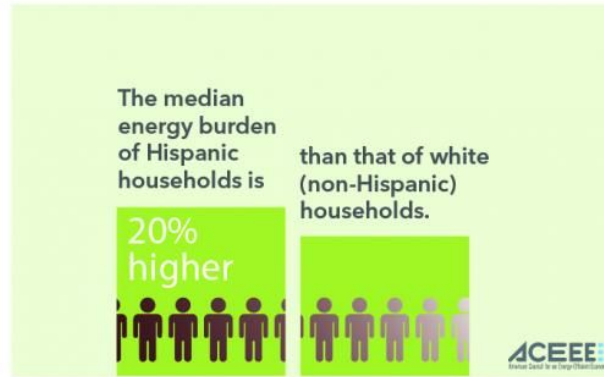
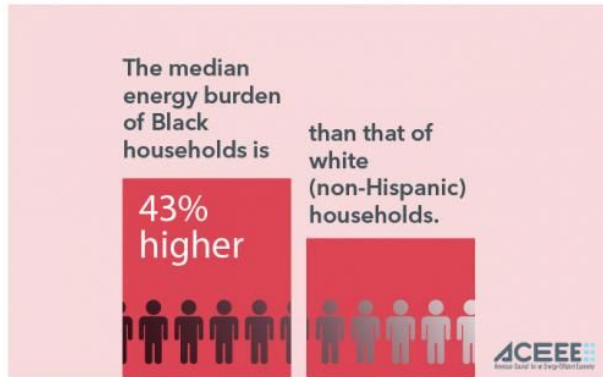
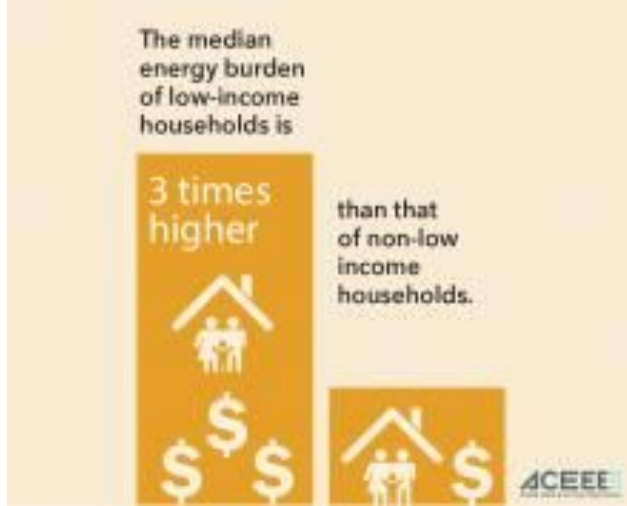
Janesville, Beloit = 3%

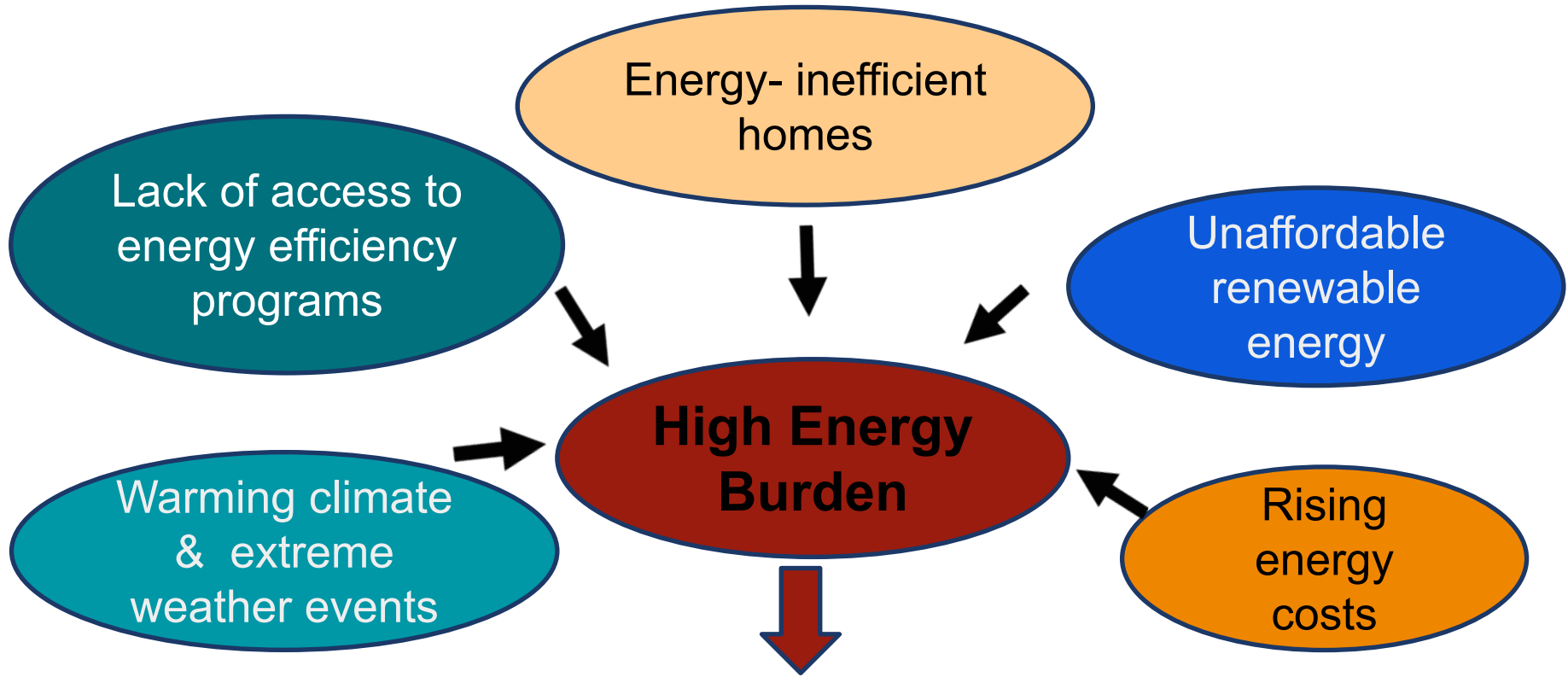
Sierra Club's Energy Burden
Calculator

<https://www.sierraclub.org/energy-burden-calculator>

Nationally, high or severe energy burdens disproportionately Impact:

- Low-income communities
- Communities of color
- Renters
- Households with children
- Seniors
- Rural residents





A Climate Justice Challenge

Low-income Energy Burden in Madison, Wisconsin: A Climate Justice Challenge

May 2022

Prepared by the Alder Liaison Team
City of Madison Community Working Group
350 Wisconsin



by
Isabel Caballero, Erica Talajkowski, and Grace Winter. Interns
and
Liz Hachten and Susan Millar, Volunteers

Available online at
<https://350wisconsin.org/ccst-reports/>

LOW-INCOME ENERGY BURDEN MADISON, WI
Energy affordability is a challenge for everyone in this era of supply inflationary pressures, and extreme weather events. This is a special problem for low-income households who may spend 13% or more of their income on energy bills. Such high "energy burden" impacts housing affordability, as well as the health and well-being of families. And it is a climate justice issue as well since without programs and policies designed to assist lower-income renters and home-owners, their energy burden is likely to increase dramatically in the coming years as climate change accelerates. A just transition to a fossil-fuel free future include the most economically vulnerable.

350 WISCONSIN
TOGETHER FOR THE CLIMATE

LOW-INCOME ENERGY BURDEN FITCHBURG, WI
Energy affordability is a challenge for everyone in this era of supply inflationary pressures, and extreme weather events. This is a special problem for low-income households who may spend 13% or more of their income on energy bills. Such high "energy burden" impacts housing affordability, as well as the health and well-being of families. And it is a climate justice issue as well since without programs and policies designed to assist lower-income renters and home-owners, their energy burden is likely to increase dramatically in the coming years as climate change accelerates. A just transition to a fossil-fuel free future include the most economically vulnerable.

350 WISCONSIN
TOGETHER FOR THE CLIMATE

LOW-INCOME ENERGY BURDEN MIDDLETON, WI
Energy affordability is a challenge for everyone in this era of supply inflationary pressures, and extreme weather events. This is a special problem for low-income households who may spend 13% or more of their income on energy bills. Such high "energy burden" impacts housing affordability, as well as the health and well-being of families. And it is a climate justice issue as well since without programs and policies designed to assist lower-income renters and home-owners, their energy burden is likely to increase dramatically in the coming years as climate change accelerates. A just transition to a fossil-fuel free future include the most economically vulnerable.

LOW-INCOME ENERGY BURDEN BELOIT, WI
Energy affordability is a challenge for everyone in this era of supply disruptions, inflationary pressures, and extreme weather events. This is a special problem for low-income households who may spend 16% or more of their income on energy bills. Such high "energy burden" impacts housing affordability, as well as the health and well-being of families. And it is a climate justice issue as well since without programs and policies designed to assist lower-income renters and home-owners, their energy burden is likely to increase dramatically in the coming years as climate change accelerates. A just transition to a fossil-fuel free future include the most economically vulnerable.

350 WISCONSIN
TOGETHER FOR THE CLIMATE

LOW-INCOME ENERGY BURDEN JANESVILLE, WI
Energy affordability is a challenge for everyone in this era of supply disruptions, inflationary pressures, and extreme weather events. This is a special problem for low-income households who may spend 13% or more of their income on energy bills. Such high "energy burden" impacts housing affordability, as well as the health and well-being of families. And it is a climate justice issue as well since without programs and policies designed to assist lower-income renters and home-owners, their energy burden is likely to increase dramatically in the coming years as climate change accelerates. A just transition to a fossil-fuel free future include the most economically vulnerable.

DEFINITIONS

Energy Burden:
The percentage of gross household income spent on energy costs.

AMI = Area Median Income
Midpoint of household income in a region

Low Income:
Households with less than 80% AMI (<80% AMI)

Extremely Low Income:
Households with less than 30% AMI (<30% AMI)

Information in this report is drawn from the U.S. Department of Energy's LEAD Tool. It draws data from the U.S. Census Bureau's 2020 American Community Survey to estimate energy costs for households at different income levels across the country.

DEFINITIONS

Energy Burden:
The percentage of gross household income spent on energy costs

AMI = Area Median Income
Midpoint of household income in a region

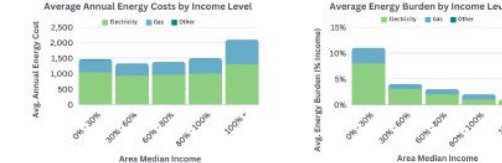
Low Income:
Households with less than 80% AMI (<80% AMI)

Extremely Low Income:
Households with less than 30% AMI (<30% AMI)

Information in this report is drawn from the U.S. Department of Energy's LEAD Tool. It draws data from the U.S. Census Bureau's 2020 American Community Survey to estimate energy costs for households at different income levels across the country.

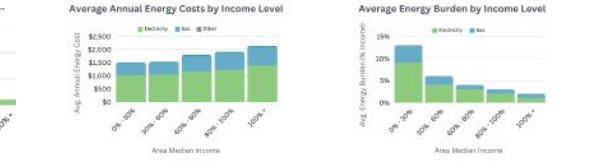
KEY FINDINGS

- Overall, the average energy burden for households in Middleton is 2%.
- The average energy burden across Wisconsin is 2%.
- In Middleton, the average energy burden for low-income households (<80% AMI) is 5% - more than twice that of the overall average energy burden.
- Extremely low-income households (<30% AMI) have an average energy burden of 11% - 11 times greater than the wealthiest households.
- On average, the lowest income households' annual utility bills are only about \$630 less than those paid by high income households, despite living in smaller spaces, suggesting that these homes are significantly less energy efficient.



KEY FINDINGS

- Overall, the average energy burden for households in Janesville is 3%, slightly above the state average of 2%.
- In Janesville, the average energy burden for low-income households (<80% AMI) is 5% - more than twice that of the overall average energy burden.
- Extremely low-income households (<30% AMI) have an average energy burden of 13%.
- The lowest income households are particularly burdened with high gas bills for heating - likely due to the age and poor condition of the affordable housing stock.



A few definitions...

AMI = Area Median Income

Midpoint of household income in a region

Low Income:

Households with less than 80% AMI (<80% AMI)

Extremely Low Income:

Households with less than 30% AMI (<30% AMI)

Includes households at or below the federal poverty level.



Information in this report comes from the U.S. Department of Energy's LEAD Tool. It draws data from the U.S. Census Bureau's 2020 American Community Survey to estimate energy costs for households at different income levels across the country.

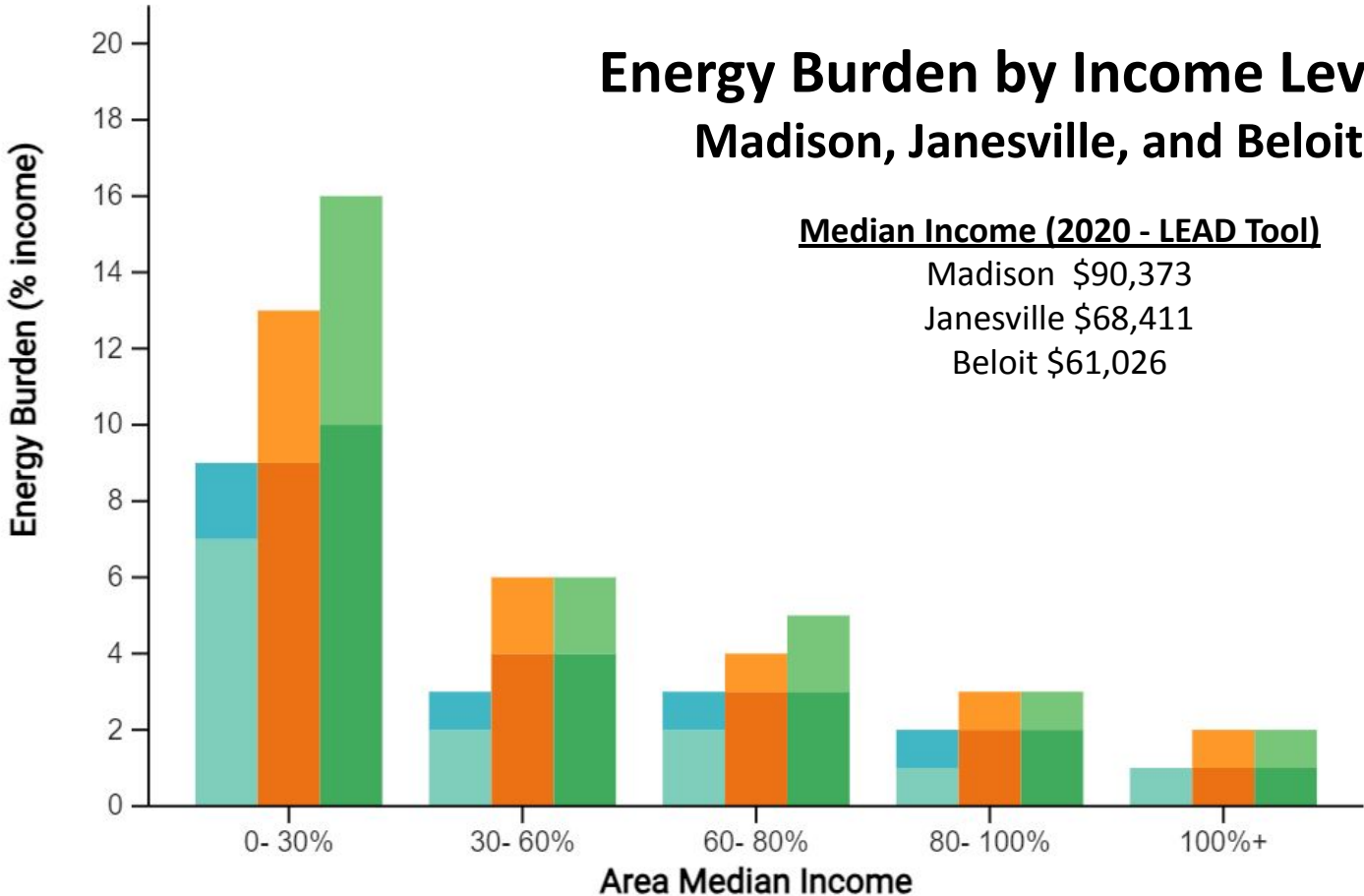
Energy Burden by Income Level – Madison, Janesville, and Beloit

Median Income (2020 - LEAD Tool)

Madison \$90,373

Janesville \$68,411

Beloit \$61,026



Madison, Wisconsin

Electricity

Gas

Janesville, Wisconsin

Electricity

Gas

Beloit, Wisconsin

Electricity

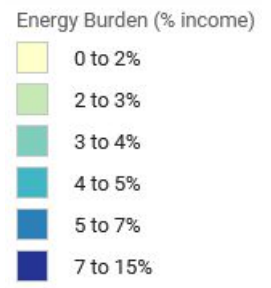
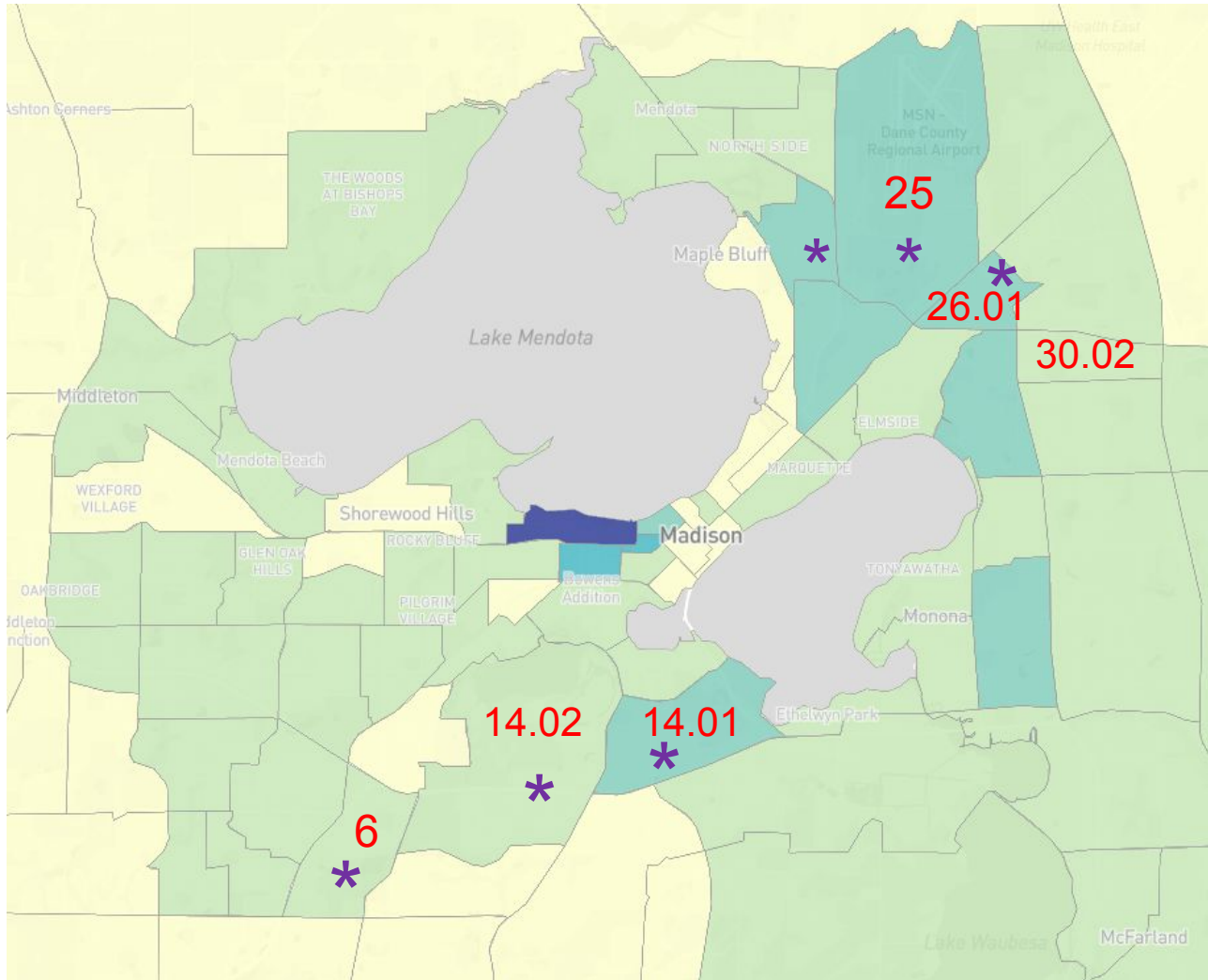
Gas

Other Key Findings from the 350 WI Reports

Low-Income energy-burdened households are:

- Most likely to be renters rather than homeowners
- Tend to live in single-family or smaller multi-family buildings or manufactured homes
- Often associated with older housing stock

The LEAD Tool provides some insight into geographic and demographic disparities



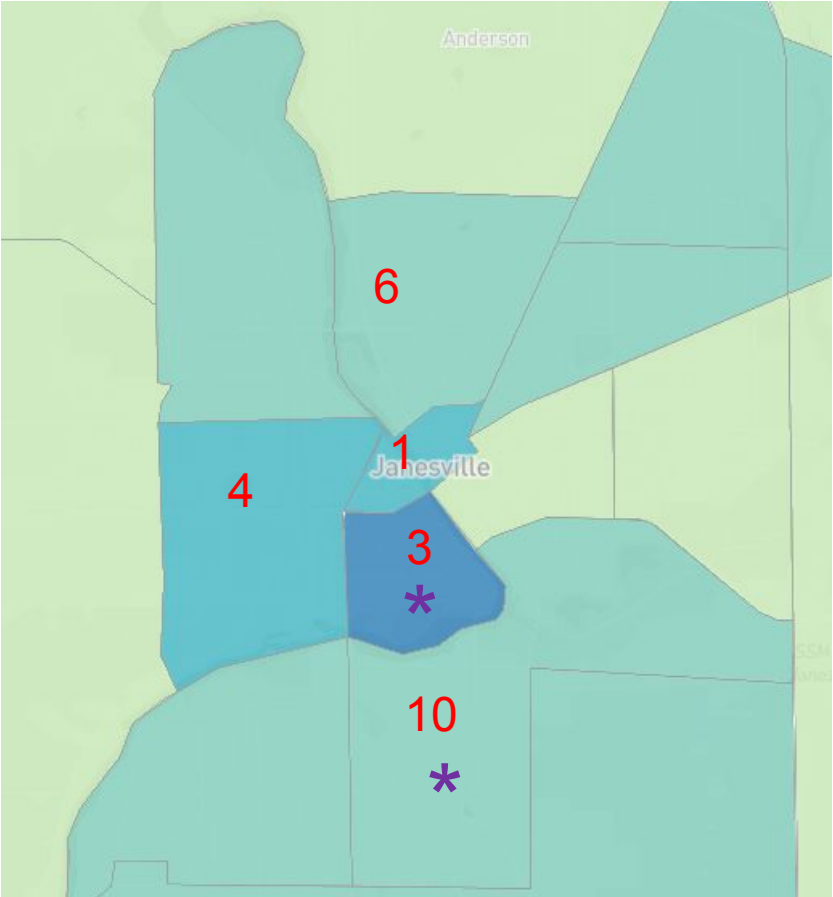
* Census tracts with large BIPOC communities

Census tracts designated as Justice40 Disadvantaged Communities using the

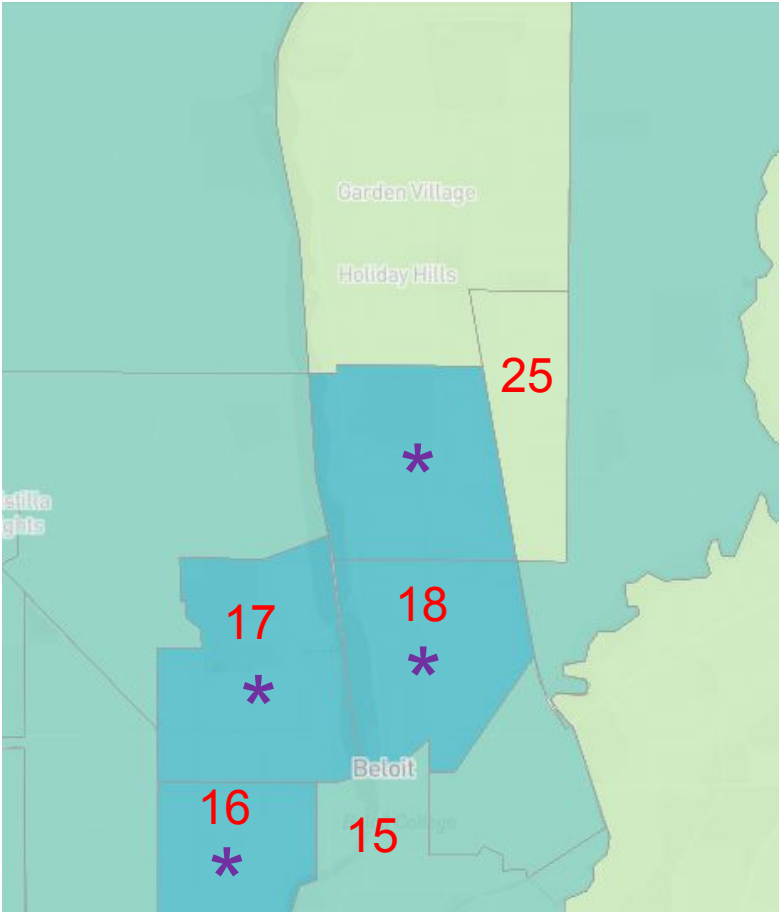
Climate and Economic Justice Screening Tool

<https://screeningtool.geoplatform.gov/>

Janesville



Beloit





Working to raise equity and Participation in Environmental
Quality and Conservation

Cristina Carvajal

Executive Director

cristina_carvajal@wisconsinecolatinos.org

www.wisconsinecolatinos.org

@Wi.EcoLatinos



 Environmental Justice Index (EJI) Explorer

The Environmental Justice Index (EJI) scores census tracts using a percentile ranking which represents the proportion of tracts that experience cumulative impacts of environmental burden and injustice equal to or lower than a tract of interest. For example, an EJI ranking of 0.85 signifies that 85% of tracts in the nation likely experience less severe cumulative impacts on health and well-being than the tract of interest, and that 15% of tracts in the nation likely experience more severe cumulative impacts from environmental burden. Click [here](#) for more information on the EJI background methods.

August 24, 2023: Data values for several fields in the 2022 EJI dataset, including EJI Rank, have been updated. Please see the [EJI Data Download](#) page for more information.

1. Select State **WI**2. Select County **All Counties**

Quick Start Guide

To display the legend:

- Select the **Legend** icon.



To select a specific location, you can:

- Use the **Select State** and **Select County** filters, in that order.

1. Select State **All States**2. Select County **All Counties**

(To reset the map, toggle the filters back to 'All States' and 'All Counties'.)

Use the Search tool for a specific geographic location like an address:



To view the responsive 'Domain Rankings' bar graph:

- Select the **Domain Rankings** tab (currently under this Quick Start tab). The bar graph will update with average rankings of the EJI domains based on the map extent or state/county selected.

To read more about the data and how to interpret these maps:

- Select **About EJI** tab in the list of map tabs.

Quick Start **Domain Rankings**

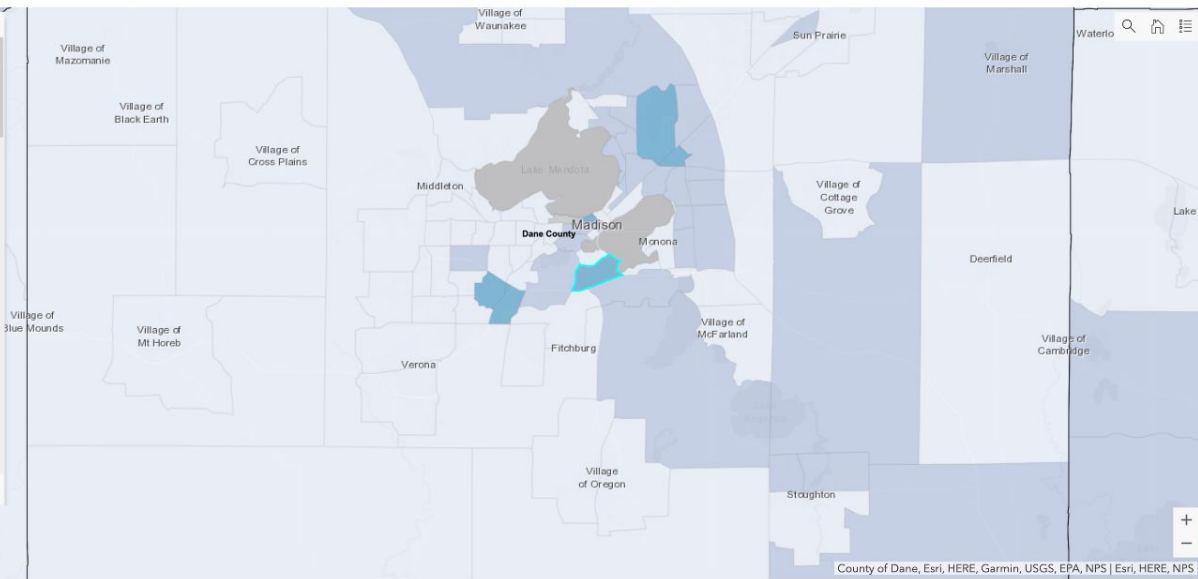
Showing 1

CDC/ATSDR Environmental Justice Index 2022

For more information on EJI indicators, click on the indicator names in the table below.

Note: Δ indicates a score of >0.75 or high prevalence of a chronic condition test

Location	Census Tract 14.01, Dane County, Wisconsin
Total Population	6,719
EJI Rank	0.73
Environmental Burden Rank	0.50
Social Vulnerability Rank	Δ 0.85
Air Pollution	0.28
Ozone	0.00
PM2.5	0.56
Diesel Particulate Matter	0.60
Air Toxics Cancer Risk	0.19




County of Dane, Esri, HERE, Garmin, USGS, EPA, NPS | Esri, HERE, NPS



EJI Highlights

The profiles below explain cases of U.S. communities facing environmental injustice.



Environmental Justice Index (EJI) Explorer

The **Environmental Justice Index (EJI)** scores census tracts using a percentile ranking which represents the proportion of tracts that experience cumulative impacts of environmental burden and injustice equal to or lower than a tract of interest. For example, an EJI ranking of 0.85 signifies that 85% of tracts in the nation likely experience less severe cumulative impacts on health and well-being than the tract of interest, and that 15% of tracts in the nation likely experience more severe cumulative impacts from environmental burden. Click [here](#) for more information on the EJI background methods.

August 24, 2023: Data values for several fields in the 2022 EJI dataset, including EJI Rank, have been updated. Please see the [EJI Data Download](#) page for more information.



1. Select State **WI** 2. Select County **All Counties**

Quick Start Guide

To display the legend:

- Select the **Legend** icon.



To select a specific location, you can:

- Use the **Select State** and **Select County** filters, in that order.

1. Select State **All States**

2. Select County **All Counties**

(To reset the map, toggle the filters back to 'All States' and 'All Counties'.)

Use the Search tool for a specific geographic location like an address:



To view the responsive 'Domain Rankings' bar graph:

- Select the **Domain Rankings** tab (currently under this **Quick Start** tab). The bar graph will update with average rankings of the EJI domains based on the map extent or state/county selected.

To read more about the data and how to interpret these maps:

- Select **About EJI** tab in the list of map tabs.

1 of 2

CDC/ATSDR Environmental Justice Index 2022

For more information on EJI indicators, click on the indicator names in the table below.

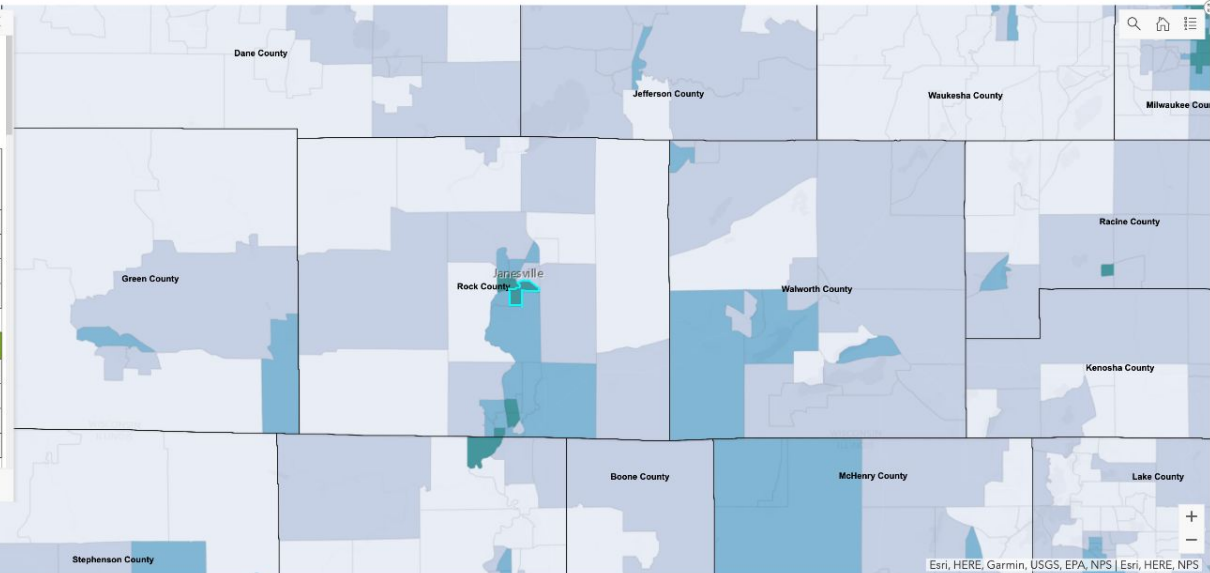
Note: **▲** indicates a score of **>0.75** or high prevalence of a chronic condition test

Location	Census Tract 10, Rock County, Wisconsin
Total Population	3,311
EJI Rank	▲0.83
Environmental Burden Rank	▲0.89
Social Vulnerability Rank	▲0.75

Air Pollution	0.50
Ozone	0.65
PM2.5	0.64
Diesel Particulate Matter	0.43
Air Toxics Cancer Risk	0.14



EJI Cumulative Impacts About EJI



Esri, HERE, Garmin, USGS, EPA, NPS | Esri, HERE, NPS

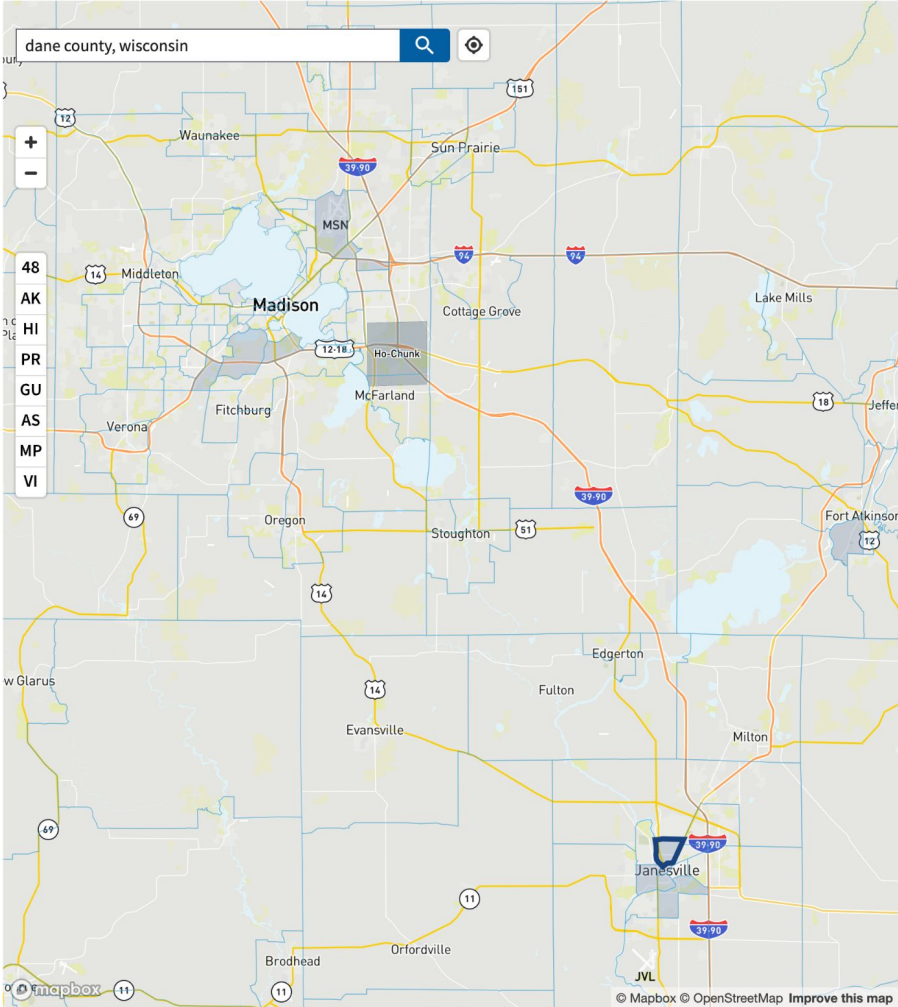


EJI Highlights

The profiles below explain cases of U.S. communities facing environmental injustice.

Click on the tabs below. You can also click the country names for links from the map to the highlighted community/county.

Climate and Economic Justice Tool



Tract information
 Number: 55105000600
 County: Rock County
 State: Wisconsin
 Population: 3,282

Tract demographics
 Race / Ethnicity ([Show](#))
 Age ([Show](#))

Identified as disadvantaged?
YES

This tract is considered disadvantaged because it meets 1 burden threshold **AND** the associated socioeconomic threshold.

[Send feedback](#)

Climate change +

Energy +

Health +

Housing -

Housing cost **59th**
 Share of households making less than 80% of the area median family income and spending more than 30% of income on housing
not above 90th percentile

Lack of green space **46th**
 Amount of land, not including crop land, that is covered with artificial materials like concrete or pavement
not above 90th percentile

Keveia Guiden

Energy Burden Organizer, Citizen Action of Wisconsin

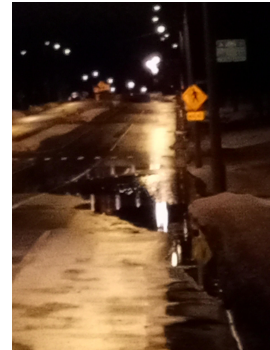
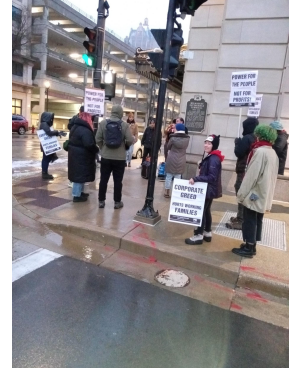
Project Coordinator, Wisconsin Climate Table

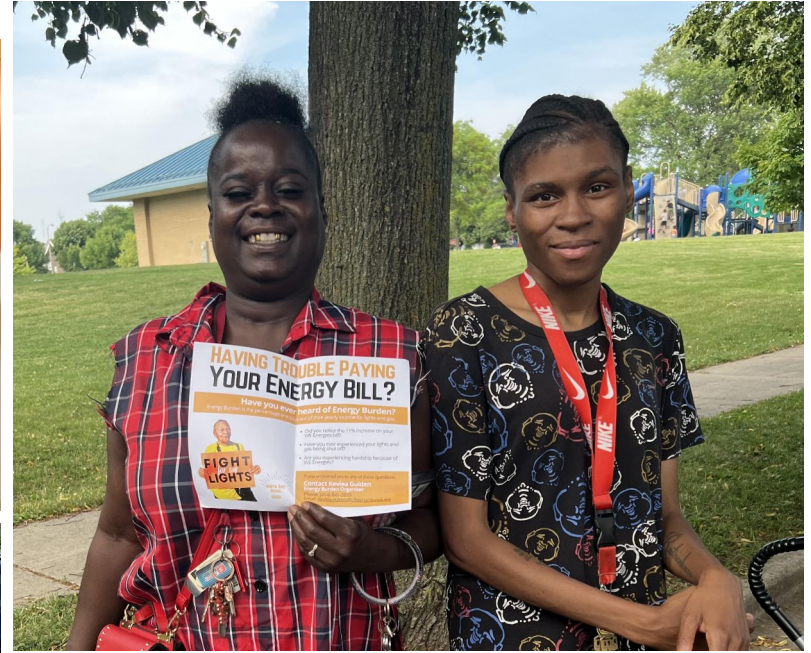


✉ keveia.guiden@citizenactionwi.org

☎ 414-841-3839

Energy burden & climate impacts in SE Wisconsin: Connecting lived experience with climate change







Action Updates

Meet our new fossil fuel organizer

Britnie Remer



Volunteer of the Month

Liz Hachten



MGE and WPL Rate Cases

Madison Gas & Electric (MGE)

- *Submit public comments through Tuesday, September 26*

Wisconsin Power & Light (WPL)

- *Submit public comments through Wednesday, October 4*
- *Testify at the public hearing on Wednesday, Sept. 13 at 1 pm or 6 pm*

Make YOUR voice heard! Talking points and the links to submit public comments are available on our blog: <https://tinyurl.com/Energy-Justice>



***New 350 Wisconsin
FLASH MOB!
Premiering September 23, 2023
at the Dane Co. Farmers' Market!***

Introducing Our NEW Natural Climate Solutions Team!

- The Natural Climate Solutions Team works on sustainable and regenerative agriculture, forest stewardship, and community-led natural climate solutions
- Upcoming events:
 - Webinar & Panel Discussion: A Climate-Friendly Farm Bill, October 17
 - Film Screenings: October 9: Kiss the Ground; October 18: The Ants & The Grasshopper
- Want to learn more or join the team? Contact Emily Park (emily.park@350wisconsin.org) or Mike Friend (mjfriend0316@gmail.com)!

“Stayin’ Alive” at the Willy Street Fair, Sept 17



To carry signs or banners, push the Chariot of the Great Turning, or follow the dancers, join us at 10:30 at parking lot of 211 S. Paterson Street (look for the 2 large “Dreamkeepers” bird sculptures)

“Let’s Get Together” at Olbrich Biergarten

We will be thanking our outgoing Executive Director, John Greenler, for his many contributions and welcoming our new Co-Executive Directors, Emily Park and Stephanie Robinson!

WHAT: “Let’s Get Together!” community event

WHEN: Thursday, September 21, 5:00PM - 7:30PM (rain date September 26)

WHERE: The Biergarten at Olbrich Park, Atwood Avenue, Madison, WI 53714



Shutting Down Bank Funding of Fossil Fuels



We have been organizing peaceful sit-ins inside banks to put pressure on Chase to stop funding fossil fuel projects.

Want to join us?

For successful NVDA, we need help with a variety of action and support roles.

Come to a virtual kickoff of the fall bank actions on Monday September 25th at 7 pm.

(to register, contact Divest.Defund@350wisconsin.org)

Next monthly meeting

October 2 - Know your Audience: Communicating to Win your Climate Campaign

On zoom only

Upcoming team meetings

Tar Sands: 1st Mondays 5:30–6:30 pm
Contact: Goetschalex3@gmail.com

Climate Justice: 2nd Mondays 7:00–8:30 pm
Contact: Marian.Fredal@350madison.org

Communication Action (CAT): 3rd Mondays 7:00-8:30 pm
Contact Emily.Park@350wisconsin.org

Divest & Defund: 4th Mondays 7-8:30 pm [Training in Sept]
Contact divest.defund@350wisconsin.org

Upcoming team meetings

Community Climate Solutions: 3rd Thursdays 5-6 pm

Contact: Susan.Millar@350wisconsin.org

Art Collective:

Contact: Russ Bennett bennett.russ@gmail.com

Dianne Brakarsh movingfromwithin@gmail.com

State Policy: Contact Janet Niewold janet.neiwold@gmail.com

Fundraising: 3rd Wednesdays 7-8pm

Contact stephanie.robinson@350wisconsin.org

Monthly Meeting planning: Contact: Julia.Isaacs@350wisconsin.org

Time for meeting each other!

Newcomers go to Sun Room (in -person) or breakout room 1

Others on zoom who want to talk with each other, stay in main Zoom room

Others in person who want to talk with each other, stay in main room

Those who want to chat in person with our speakers, meet in the library